

Catalog pentru
vopsea de par

Vitality's

de la **OJA**.RO

naturali

NATURAL ▲ NATURELS ▲ NATURALES ▲ NATURTÖNE

1/00

1/0

3/0

4/0

5/0

6/0

7/0

8/0



Very Dark
Olive Black
Noir Char
Nero Chiaro
Nero Chiaro
Dunkel Schwarz



Very
Dark
Noir
Nero
Nero
Schwarz



Dark brown
Dark chestnut
Olive hair
Chestnut brown
Dunkelbraun



Olive
Chestnut
Olive
Chestnut
Mittelbraun



Dark chestnut
Light chestnut
Olive hair
Chestnut hair
Hellbraun



Dark blonde
Dark blonde
Blond hair
Fald braun
Dunkelblond



Blonde
Blonde
Blond
Blond
Mittelblond



Light blonde
Light blonde
Blond hair
Hell blonde
Hellblond

naturali intensi

NATURAL INTENSIVE ▲ INTENSE NATURELS
NATURALE INTENSOS ▲ INTENSIVE NATURTÖNE

9/0

10/0



Super light blonde
Super light blonde
Blond hair color
Super blonde
Hell Hellblond



Very light blonde
Very light blonde
Blond hair color
Blond hair
Schneeweißblond

4/00

5/00

6/00

7/00

8/00



Dark chestnut
Dark chestnut
Olive hair
Chestnut hair
Braun Hellbraun



Dark light chestnut
Dark light chestnut
Olive hair color
Chestnut hair color
Braun Hellbraun



Dark dark blonde
Dark dark blonde
Blond hair color
Blond hair color
Braun Dunkelblond



Dark blonde
Dark blonde
Blond hair
Blond hair
Braun Mittelblond



Dark light blonde
Dark light blonde
Blond hair color
Blond hair color
Braun Hellblond

naturali perla

NATURAL PEARL ▲ NATUREL PERLE
NATURALES PEARLADO ▲ NATURAPERLE

5/08

6/08

7/08

8/08

9/8



Light natural pearl blonde
Light natural pearl blonde
Olive hair color
Chestnut hair color
Hellbraun Hellperl



Dark natural pearl blonde
Dark natural pearl blonde
Blond hair color
Blond hair color
Dunkelbraun Hellperl



Natural pearl blonde
Natural pearl blonde
Blond hair color
Blond hair color
Mittelbraun Hellperl



Light natural pearl blonde
Light natural pearl blonde
Blond hair color
Blond hair color
Hellbraun Hellperl



Lightest pearl blonde
Lightest pearl blonde
Blond hair color
Blond hair color
Hell Hellbraun Hellperl

cenere

ASH ▲ CENDRE ▲ CENICIENTO ▲ ASCH

6/1

7/1

8/1

9/13



Dark ash blonde
Tint ash blonde
Blond ash blonde
Faded ash blonde
Darkened ash



Ash blonde
Blond ash blonde
Faded ash blonde
Darkened ash



Light ash blonde
Blond ash blonde
Faded ash blonde
Darkened ash



Super light ash blonde
Blond ash blonde
Faded ash blonde
Darkened ash

beige

6/2

8/2

10/2



Dark beige blonde
Blond beige blonde
Faded beige blonde
Darkened beige



Light beige blonde
Blond beige blonde
Faded beige blonde
Darkened beige



Super light beige blonde
Blond beige blonde
Faded beige blonde
Darkened beige

dorati

GOLDEN ▲ DORES ▲ DORADOS ▲ BLONDÛNE

5/3

6/3

7/3

8/3

9/3



Light golden blonde
Blond golden blonde
Faded golden blonde
Darkened golden blonde



Golden blonde
Blond golden blonde
Faded golden blonde
Darkened golden blonde



Super golden blonde
Blond golden blonde
Faded golden blonde
Darkened golden blonde



Light golden blonde
Blond golden blonde
Faded golden blonde
Darkened golden blonde



Super light golden blonde
Blond golden blonde
Faded golden blonde
Darkened golden blonde

marroni

BROWN ▲ MARRONS ▲ MARRONES ▲ BRAUNTÖNE

3/9

4/9

5/9

6/9

7/9



Color: very dark brown
Dark coffee
Dark
Dark beige
Dark brown

Color: dark brown
Dark brown

Color: medium brown
Light brown
Medium brown
Medium brown
Medium brown

Color: light brown
Light brown
Light brown

Color: light brown
Light brown

marroni freddi

COLD BROWN ▲ MARRONS FROIDS ▲ MARRONES FRIOS ▲ HALTE BRAUNTÖNE

5/91

5/92

8/92



Color: dark brown
Light brown
Dark brown
Dark brown
Dark brown

Color: dark brown
Light brown
Dark brown
Dark brown
Dark brown

Color: dark brown
Light brown
Dark brown
Dark brown
Dark brown

sabbia

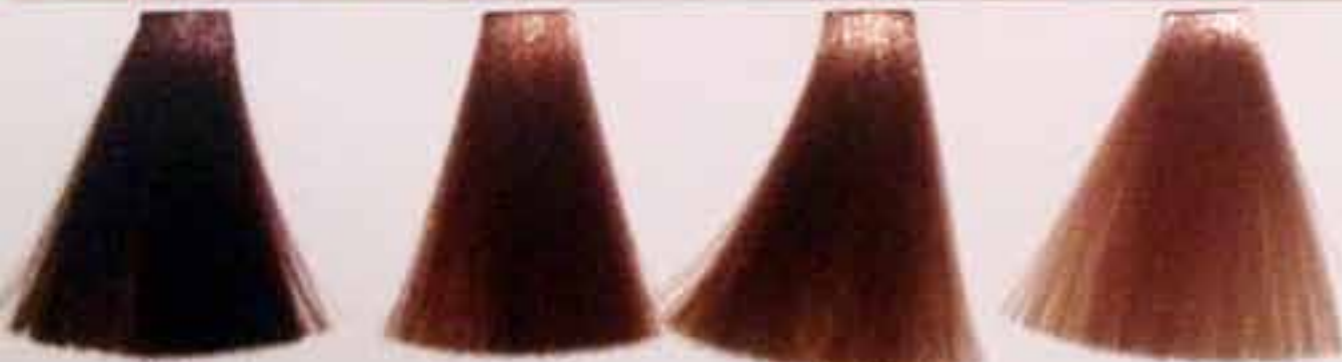
SAND ▲ SABLE ▲ ARENA ▲ SAND

6/95

8/94

8/31

9/21



Color: dark brown
Dark brown
Dark brown
Dark brown
Dark brown

Color: dark brown
Dark brown
Dark brown
Dark brown
Dark brown

Color: light brown
Light brown
Light brown
Light brown
Light brown

Color: light brown
Light brown
Light brown
Light brown
Light brown

de la OJA.RO

ramati

COPPERY ▲ CUIVRES ▲ ENCOBRADOS ▲ HUPFERTÖNE

6/4

7/4

7/44

8/44

7/43

8/43

7/34

9/34



Bronze scure rame
Dark copper brush
Borde fonce cuivre
Rubi scure encobrado
Dunkelblau Kupfer



Bronze rame
Copper brush
Scure rame
Rubi encobrado
Mittelschwarz Kupfer



Bronze rame profunde
Dark copper brush
Borde fonce profunde
Rubi scure profunde
Mittelschwarz Kupfer



Bronze rame clara
Light copper brush
Borde fonce clara
Rubi scure clara
Mittelschwarz Kupfer



Bronze rame scure
Dark copper brush
Borde fonce scure
Rubi scure scure
Mittelschwarz Kupfer



Bronze rame clara
Light copper brush
Borde fonce clara
Rubi scure clara
Mittelschwarz Kupfer



Bronze rame
Copper brush
Scure rame
Rubi scure
Mittelschwarz Kupfer



Bronze rame scure
Dark copper brush
Borde fonce scure
Rubi scure scure
Mittelschwarz Kupfer

rossi diva

STAR RED ▲ ROUGES DIVA ▲ ROJOS DIVA ▲ DIVA ROTTORE

4/85

5/86

6/88

7/46



Star red
Dark red
Rouge scure
Rubi scure
Schwarz



Star rouge
Dark red
Rouge scure
Rubi scure
Schwarz



Star rouge
Dark red
Rouge scure
Rubi scure
Schwarz



Star rouge
Dark red
Rouge scure
Rubi scure
Schwarz

mogano

MANDARIN ▲ ROJOU
COPRA ▲ MORADO

4/5

5/5

6/5



Dark mogano
Mogano scure
Rouge scure
Rubi scure
Schwarz



Dark mogano
Mogano scure
Rouge scure
Rubi scure
Schwarz



Dark mogano
Mogano scure
Rouge scure
Rubi scure
Schwarz

violetti

VIOLET ▲ VIOLETS
MORADO ▲ VIOLETT

4/80

5/80



Dark violet
Dark violet
Morado scure
Rubi scure
Mittelschwarz Violett



Dark violet
Light violet
Morado scure
Rubi scure
Mittelschwarz Violett

ROSSI

RED ▲ ROUGES ▲ ROJOS ▲ ROTTÖRE

4/6

5/6

6/6

6/66

7/66

6/64

7/64

5/68



General red
Rouge chatoié
Chestnut rouge
Chestnut red
Mélangeur Red

Chestnut ultra red
Light chestnut chestnut
Chestnut star rouge
Chestnut star rouge
Mélangeur Red

Wine ultra red
Dark chestnut chestnut
Wine chestnut
Wine chestnut
Mélangeur Red

Red ultra
Red chestnut
Rouge ultra
Red chestnut
Mélangeur Red

Red ultra
Red ultra
Rouge ultra
Red ultra
Mélangeur Red

Red ultra
Red ultra
Rouge ultra
Red ultra
Mélangeur Red

Red ultra
Red ultra
Rouge ultra
Red ultra
Mélangeur Red

Chestnut ultra red
Light chestnut ultra red
Chestnut star rouge ultra
Chestnut star rouge ultra
Mélangeur Red

6/65



Red ultra
Red ultra
Rouge ultra
Red ultra
Mélangeur Red

ultrabiondi

ULTRABLONDE ▲ SUPER ECLAIRCISSANTS
ULTRA ACLARANTES ▲ ULTRABLOND

100

101

102

103



Ultra blonde
Nature ultrablond
Super éclaircissant naturel
Futur ultra éclaircissant naturel
Ultra blond Nature

Ultra blonde
Ail ultrablond
Super éclaircissant naturel
Futur ultra éclaircissant naturel
Ultra blond Ail

Ultra blonde
Téa ultrablond
Super éclaircissant naturel
Futur ultra éclaircissant naturel
Ultra blond Téa

Ultra blonde
Golden ultrablond
Super éclaircissant naturel
Futur ultra éclaircissant naturel
Ultra blond Golden

superschiarenti

ULTRALIGHTENING ▲ SUPER ECLAIRCISSANTS
SUPERACLARANTES ▲ ULTRAHELLE TÖNE

1000

1008



Superschiarenti
Nature ultralightening
Super éclaircissant naturel
Superschiarenti naturel
Ultra helles Natur

Superschiarenti
Perle ultralightening
Perle super éclaircissant
Perle superschiarenti
Ultra helles Perle

base

00



Spectra

de la **OJA**.RO

pure

Gold

Orange

Red

Fuxia



hip pop

Aubergine

Rubino

Magenta

Rame

Caramello

Miele



1 IL CORRETTO UTILIZZO DI HIP POP

PREPARAZIONE

Indossare guanti adeguati. Miscelare in un contenitore non metallico la nuance scelta di Hip Pop con l'ossidante cremoso Art Performer scelto (vedere la tabella sottostante per la scelta dell'ossidante cremoso). Il rapporto di miscelazione è 1+1,5 (es. 20 gr. di crema colorante + 30 gr. di ossidante cremoso). Miscelare bene per ottenere una crema omogenea e procedere all'applicazione su capelli asciutti.

APPLICAZIONE

Distribuire il prodotto sulle ciocche selezionate secondo la tecnica di applicazione scelta, avendo cura di non applicare il prodotto sulla cute.

TEMPI DI POSA

30 minuti senza fonte di calore. 15 minuti con un moderato apporto di calore.

POST-TRATTAMENTO

Trascorso il tempo di posa, emulsionare bene con acqua, sciacquare abbondantemente ed eseguire lo shampoo Technica Color+ Shampoo. È importante ricordare che Hip Pop non può essere utilizzato sulla cute. Applicato sui capelli appena colorati, il colore potrebbe risultare poco visibile.



	Capelli naturali Natural colour Cheveux naturels Color natural Naturalfarbe		Capelli colorati scuri Dark coloured hair Cheveux foncés colorés Cabellos oscuros teñidos Dunkel gefärbte Haare		Capelli colorati chiari Light coloured hair Cheveux clairs colorés Cabellos teñidos claros Hellgefärbte Haare		Mèches decolorate Bleached locks Mèches décolorées Con mechas Auf blondierte Strähnen	
	100% Hip Pop 100% Hip Pop 100% Hip Pop	Art Performer	100% Hip Pop 100% Hip Pop 100% Hip Pop	Art Performer	100% Hip Pop 100% Hip Pop 100% Hip Pop	Art Performer	100% Hip Pop 100% Hip Pop 100% Hip Pop	Art Performer
RUBINO RUBY RUBI RUBI RUBIN	4-5	30-40 vol. 9%-12%	5-6	30 vol. 9%	7-8	20 vol. 6%	9-10	10-20 vol. 3% - 6%
ARANCIONE	4-5	30-40 vol. 9%-12%	5-6	30 vol. 9%	7-8	20 vol. 6%	9-10	10-20 vol. 3% - 6%
AZZURRO	6	30-40 vol. 9%-12%	6-7	30 vol. 9%	7-8	20 vol. 6%	9-10	10-20 vol. 3% - 6%
ROSSO COPPIN COPPIN COPPIN COPPIN COPPIN	5-6	30-40 vol. 9%-12%	6	30 vol. 9%	7-8	20 vol. 6%	9-10	10-20 vol. 3% - 6%
CARAMELO CARAMEL CARAMELO CARAMELO GOLDWASSER	5-6	30-40 vol. 9%-12%	6	30 vol. 9%	7-8	20 vol. 6%	9-10	10-20 vol. 3% - 6%
NERO NOIR NOIR NOIR NOIR	6	30-40 vol. 9%-12%	6-7	30 vol. 9%	7-8	20 vol. 6%	9-10	10-20 vol. 3% - 6%

* Base ideale - Ideal base - Base ideale - Base ideal - Idealbasis

4 Cabello Chestnut Chestnut Chestnut Hitzbraun	5 Cabello claro Light chestnut Chestnut clair Chestnut clair Hellbraun	6 Sombra oscura Dark blonde Blond foncé Blond foncé Dunkelblond	7 Sombra Blonde Blond Blond Blond	8 Sombra clara Light blonde Blond clair Blond clair Hellblond	9 Sombra clarísima Super light blonde Blond très clair Super rubis Hellhellblond	10 Sombra clarísima platino Very light platinum blonde Blond très clair platine Rubis clarísimo platine Platinblond
---	---	--	--	--	---	--

2 THE CORRECT USE OF HIP POP - Always wear suitable gloves. Your developer strength is chosen after a thorough client analysis and consultation. Hip Pop can be used with 20vol, 30vol and 40vol. Hip Pop is not designed to be applied on the scalp. For premium results with Hip Pop, natural hair (a non coloured base) will be best suited. Obviously hair that has been previously coloured, and hair that may have a build up of colour on the hair shaft (many applications of colour; semi, demi or permanent) will need particular attention in your consultation, hair analysis and client expectations. A test strand is always recommended in these instances. We do not recommend Hip Pop to be applied to the hair on the same day as the initial colour service (ie: regrowth tint application, change of reflect, colour correction etc). After conducting a thorough client consultation and hair analysis has been completed, mix in a non-metallic bowl the chosen Hip Pop colour and chosen developer to a 1: 1.5 ratio (i.e. 10 gr Hip Pop + 15 gr Art Performer). The required processing time for Hip Pop is 30 min without a heat source. The timing may be reduced if heat is used. 15 min with a moderate use of heat will assist the processing and end result of Hip Pop. Hip Pop is to be removed from the hair by emulsifying the product with warm water and gently shampooing and equalizing and restoring the pH of the hair.

3 L'USAGE CORRECT DE HIP POP - PREPARATION - Porter des gants adaptés. Choisir un bol non métallique; mélanger la nuance de Hip Pop choisie avec l'émulsion oxydante Art Performer choisie (voir le tableau ci-dessous pour le choix de l'émulsion oxydante). Le rapport de mélange est de 1+1,5 (ex. 20 g. de crème colorante + 30 g. d'émulsion oxydante). Mélanger jusqu'à l'obtention d'une crème homogène et procéder à l'application sur cheveux secs. **APPLICATION** - Appliquer le produit sur les racines choisies, en utilisant la technique d'application choisie, en prenant soin de ne pas appliquer le produit sur la peau. **TEMPS DE POSE** - 30 minutes sans source de chaleur. 15 minutes avec source de chaleur. **POST-TRAITEMENT** - À la fin du temps de pose, bien émulsionner avec de l'eau, rincer abondamment et effectuer un shampooing avec Technica Color+ Shampoo. Il est important de rappeler que Hip Pop ne doit pas être appliqué sur la peau. Appliqué sur des cheveux à peine colorés, le résultat obtenu peut être peu visible.

4 EL CORRECTO EMPLEO DE HIP POP - PREPARACIÓN - Usar guantes adecuados. Mezclar en un recipiente que no sea metálico la nuance decidida con la emulsión oxidante Art Performer adecuada (véase el cuadro siguiente para la elección de la emulsión oxidante). La mezcla es 1+1,5 (ej. 20 g. de crema colorante + 30 g. de emulsión oxidante). Mezclar bien para obtener una crema homogénea y proceder a la aplicación sobre los cabellos secos. **APLICACIÓN** - Aplicar la mezcla sobre las mechas que se desean colorear mediante la técnica de aplicación decidida, teniendo cuidado de no aplicar el producto sobre la piel. **TIEMPO DE POSA** - 30 minutos sin fuente de calor. 15 minutos con fuente de calor. **POST-TRATAMIENTO** - Pasado el tiempo de posa emulsionar bien con agua, enjuagar abundantemente y lavar con Technica Color+ Shampoo. Se recuerda que Hip Pop no debe ser aplicado en el cuero cabelludo. Si el producto viene aplicado después de un tinte, el color puede resultar poco visible.

5 DIE KORREKTE ANWENDUNG VON HIP POP - ANWENDUNG - Geeignete Handschuhe tragen. In einem nicht metallischen Behälter die gewählte Nuance mit der Oxidationscreme Art Performer mischen (siehe Tabelle für die Auswahl der Oxidationscreme). Das Mischverhältnis ist 1 +1.5 (z. B. 20 g Colorcreme + 30 g Oxidationscreme). Gut machen, bis eine homogene Creme entsteht, auf trockenem Haar färben. Das Produkt gleichmäßig auf den Strähnen verteilen. Das Produkt darf nicht mit der Kopfhaut in Berührung kommen. **EINWIRKUNGSZEIT** - Ohne Wärme 30 Minuten einwirken lassen, mit Wärme 15 Minuten einwirken lassen. **NACHBEHANDLUNG** - Am Ende der Einwirkungszeit gründliche mit Wasser ausspülen und shampooieren mit Technica Color+ Shampoo. Diese Mischung nicht auf der Kopfhaut anwenden! Auf frisch gefärbten Haaren, ist das Ergebnis nicht so intensiv.



OJA.RO

Magazin online
de cosmetice si produse de
ingrijire personala